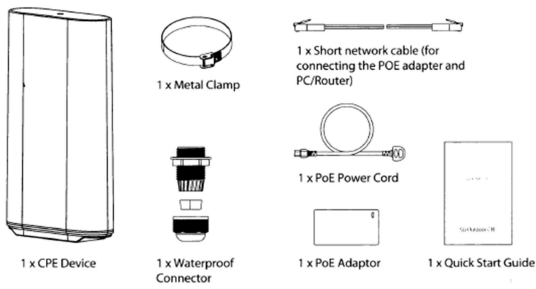


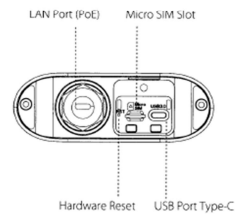
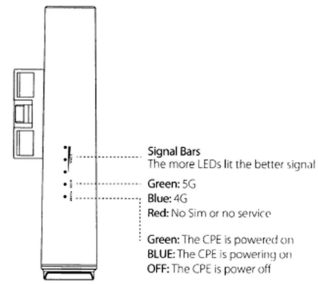
## • Package Contents

Before installing the outdoor CPE, please verify that all the items listed below are present in the package. If any of the items is missing or damaged, please contact the device provider.



01

## • Hardware Introduction



02

## • Setup CPE

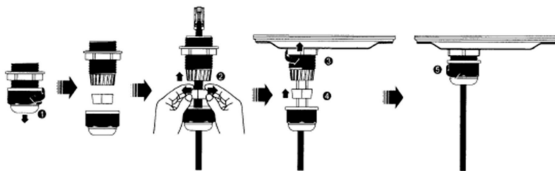
### 1. Install SIM Card



Unscrew the cover at bottom of the CPE device, install the Micro SIM (3FF) into the Sim slot, and reattach the cover.

Please ensure the sim card is fully inserted into Sim slot.

### 2. Connect the Ethernet Cable (PoE Cable) to CPE

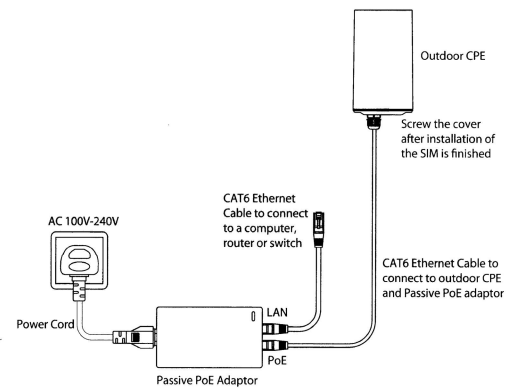


Note: The Ethernet Cable here is the long cable that connect the outdoor device and the PoE power adaptor indoor. And the cable is not included in the package.

03

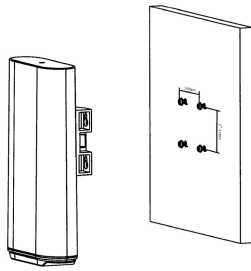
## • Connection and Installation

1. Please connect and install the device as shown in the figure below.

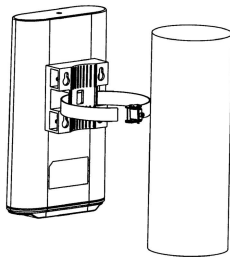


04

## 2. Secure the CPE to wall or pole

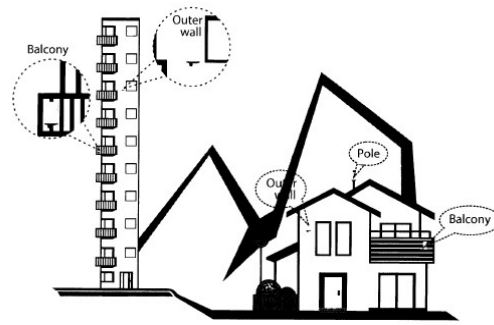


Wall mounted



Pole mounted

## • Recommended Installation Locations



An elevated location is recommended as obstacles like trees, buildings and large steel structures will weaken the wireless signal. There are some spots where are recommended for installation.

- Balcony or terrace
- Beside a window.
- Poles that next to the house.

To ensure the best speeds possible ensure:

- 1.The CPE is facing the closest transmitter of your SIM's carrier.
- 2.Your chosen location is suitable to have a pole attached to it, or the surface is durable enough for the CPE to be mounted to it (e.g., wall).
- 3.Clear line of sight between CPE and transmitter where available. Avoid Buildings, walls, rooflines, metal, and double glazing where possible. Consider signal height, reflections & obstructions.
- 4.Please install the mobile application to detect the signal strength and help you to decide the best installation location.

05

06

## • Logging in CPE Web Page

- 1.In case a PC is directly connected to LAN port of PoE adaptor, you can access CPE from the PC.
- 2.In case a router is connected to LAN port of PoE adaptor, ensure your device gets connected to the router.
- 3.Enter "192.168.8.1" in your browser and login CPE Web Page. The default username / password is available on the device label or giftbox label.

**Note:** It is strongly recommended that PC/Router to be configured to obtain the WAN IP dynamically.

## • Safety Information

Read all safety information before using the device to ensure safe and proper use.

- Do not expose the device to physical impact or damage.
- Use only manufacturer-approved accessories, and supplies.
- Do not store your device near or in heaters, microwaves, cooking equipment, or high-pressure containers. Keep your device dry.
- Avoid water and wet locations.
- Do not try to disassemble the device by yourself, please contact service provider.
- Keep the device, accessories, and packages away from children.
- Ideal operating temperatures are -20 C to 60 C.
- Ideal storage temperatures are -20 C to 80 C.

07

## Quick Start Guide 5G Outdoor Router

Name : **QLINK**

Model : **O2 PRO**



Reference No. : WTD22D08162116N  
 Applicant : **On demand** TECHNOLOGY LIMITED  
 Address : **On demand** Tower 1, Lippo Centre, 89 Queensway, Hong Kong  
 Manufacturer : The same as above  
 Address : The same as above  
 Product : 5G Outdoor CPE  
 Model No. : O2 Pro  
 Technical data : Input: 48V $\overline{=}$  0.5A, 24W (powered by POE power supply with model RP024W01-4800500YE: Input: 100-240V, 50/60Hz, 0.6A Max; output: 48V $\overline{=}$  0.5A, 24W)



**Test Standards:**  
 COMMISSION REGULATION (EC) No 1275/2008 Amended by (EU) No 801/2013

The above product has been tested by us with the listed standards and found in compliance with the European Directive 2009/125/EC. It is possible to use CE marking to demonstrate the compliance with this ErP Directive.

The referred test report(s) show that the product complies with standard(s) recognized as giving presumption of compliance with the essential requirements in the above mentioned EU Directive. Other relevant Directives have to be observed.

After preparation of the necessary technical documentation as well as the EU Declaration of Conformity, the CE marking as shown below can be affixed on the equipment under the sole responsibility of the manufacturer:



*Deval Qin*  
 Manager: Deval Qin  
 Date: 2022-9-20



The statement is based on a single evaluation of the sample of above mentioned product. It does not imply an assessment of the whole production.

**Waltek Testing Group Co., Ltd.**

Hotline: 400-840-2288

E-mail: info@waltek.com.cn

Http://www.waltek.com.cn

Ver.02. 29.07.2022, WALTEK is registered trademark. Utilisation and application requires prior approval.